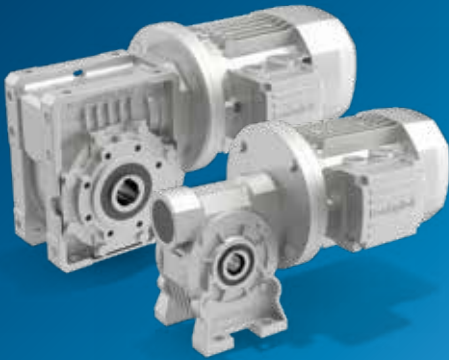


# Universal Worm Gearmotors & Units



## VF/W Series

The VF/W Series succeeds in combining uncompromising quality with state-of-the-art technology and cost-effectiveness. The wide choice of mounting options allows for completely flexible shaft configurations and motor interfaces, all offered as standard. Thanks to several patented manufacturing techniques, Bonfiglioli's VF/W Series stands out for its long operating life and reliability.



ATEX GEARBOX AVAILABLE

### Gear ratios

- 7 - 300 ... 2,300

### Mechanical rating

- 0.04 ... 75 kW

### Motors

- Input with solid shaft
- Input with e-motor coupling:
  - M, ME, MX (compact asynchronous)
  - BN, BE, BX (IEC asynchronous)
  - BSR (IEC reluctance)
  - BS (IEC single phase)

### Motor options

- Thermistors and thermostat sensors
- Independent forced cooling
- Incremental, sin/cos absolute single/multi-turn encoders
- Tropicalization
- Anti-condensation heaters
- Backstop

### Main options

- Up to C5 Surface protection
- Short flange & reinforced bearings
- Torque arm
- Fluoroelastomer oil seals

### Key benefits

- Cost-effective solution
- Low noise
- High peak load capacity
- Minimized mounting space
- Long operating life
- High reliability
- Many possible configurations
- Wide output speed/torque selection range
- Reduced installation space and wide output speed selection range

### Key features

- Consolidated worm technology
- Compact design
- High quality standards
- Patented manufacturing techniques
- Wide range of options/versions
- Pre-stage version
- Atex - gearbox for explosive environments 2G/2D

### Torque (Nm)

VF 27	13
VF 30	24
VF 44	55
VF 49	88
W 63	190
W 75	320
W 86	440
W 110	830
VF 130	1,500
VF 150	2,000
VF 185	3,600
VF 210	5,000
VF 250	7,100