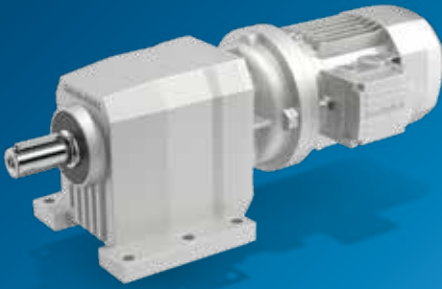


In-line Gearmotors & Units



C Series

The C Series is designed for the requirements of standard tasks in the industrial environment. These series achieve first-rate reliability, efficiency, robustness, and a wide output torque range. The extremely wide range of gear ratios, achieved through 2-, 3- or 4-stage versions, allows the customer to adapt the C Series to every application and to find the perfect match for output speed requirements.



ATEX GEARBOX AVAILABLE

Gear ratios

- 2.6 ... 1,481

Mechanical rating

- 0.09 ... 213 kW

Motors

- Input with solid shaft
- Input with e-motor coupling:
 - M, ME, MX (compact asynchronous)
 - BMD (servo permanent magnet)
 - BSR (IEC reluctance)
 - BN, BE, BX (IEC asynchronous)
 - BS (IEC single phase)

Motor options

- Thermistors and thermostat sensors
- Independent forced cooling
- Incremental, sin/cos absolute single/multi-turn encoders
- Tropicalization
- Anti-condensation heaters
- Backstop

Main options

- Long-life lubrication (sizes from 16 to 35)
- Gearbox supplied with oil (sizes from 45 to 100)
- Fluoroelastomer oil seals

Key benefits

- Cost-effective solution
- Minimized mounting space
- Easy maintenance
- Operation in a high-temperature environment
- High resistance to external hits
- Pure coaxial torque transmission

Key features

- Space-optimized design
- Compact motor coupling
- Unibox housing
- Forced gear-shafts coupling
- Servomotor coupling
- Wide ratio range (4 stages)
- Atex- gearbox for explosive environments 2G/2D

Torque (Nm)

C 05	45
C 12	100
C 22	200
C 32	300
C 36	450
C 41	600
C 51	1,000
C 61	1,600
C 70	2,300
C 80	4,000
C 90	7,200
C 100	12,000