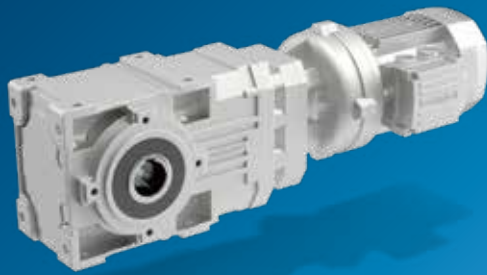


Helical Bevel Gearmotors & Units



A Series

The A Series combines high efficiency and reliability, low maintenance costs and a wide torque range. The right angle layout between INPUT and OUTPUT makes the A Series particularly compact. The gear set combination makes this right-angle product the most efficient and durable in Bonfiglioli's light- and medium-duty portfolio.



ATEX GEARBOX AVAILABLE

Gear ratios

- 4.9 ... 1,715

Mechanical rating

- 0.22 ... 150 kW

Motors

- Input with solid shaft
- Input with e-motor coupling:
 - M, ME, MX (compact asynchronous)
 - BMD (servo permanent magnet)
 - BSR (IEC reluctance)
 - BN, BE, BX (IEC asynchronous)
 - BS (IEC single phase)

Motor options

- Thermistors and thermostat sensors
- Independent forced cooling
- Incremental, sin/cos absolute single/multi-turn encoders
- Tropicalization
- Anti-condensation heaters
- Backstop

Main options

- Surface protection up to C5
- Reinforced bearings
- Reduced backlash
- Torque arm
- Fluoroelastomer oil seals
- Double oil seasonal input
- Taconite seals

Key benefits

- Minimized mounting space
- Reduced installation space and wide output speed selection range
- Reduced standard backlash
- Highly dynamic, energy-saving solution
- Wide output speed selection range
- Gearboxes can operate safely in explosive environments

Key features

- Right-angle input-output
- Compact motor coupling
- Forced gears-shafts coupling
- Servomotor coupling
- Wide ratio range (4 stages)
- Atex - gearbox for explosive environments 2G/2D

Torque (Nm)

A 05	100
A 10	150
A 20	250
A 30	410
A 35	600
A 41	850
A 50	1,500
A 55	2,000
A 60	2,800
A 70	5,000
A 80	8,000
A 90	14,000