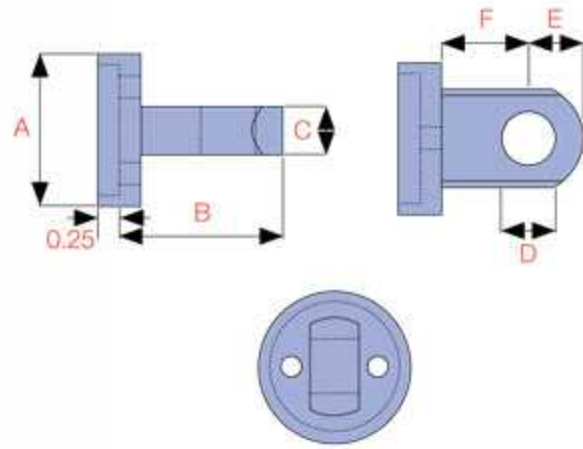
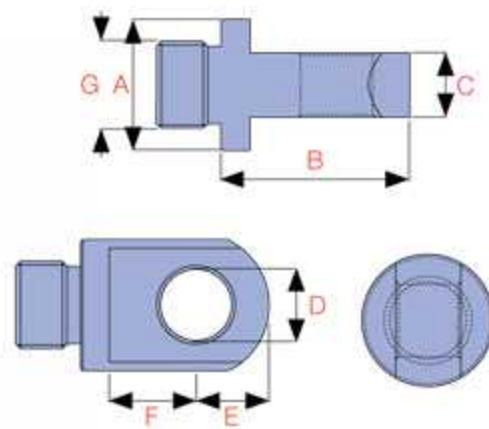


BASE CLEAVISES



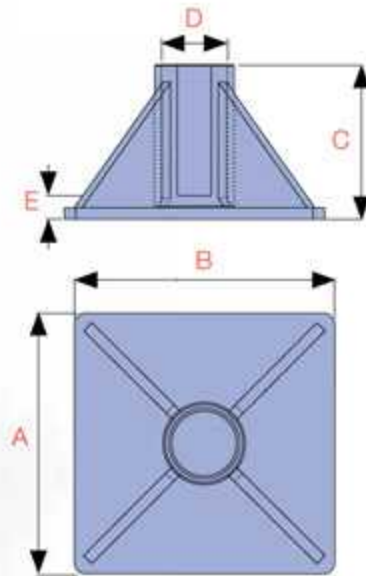
Model No.	Cylinder Capacity (ton)	Dimensions (mm)					
		A	B	C	D	E	F
CBC-5	5	44	47	14	16	16	25
CBC-10	10	63	66	25	22	25	35
CBC-15	15	76	66	25	22	25	35
CBC-25	25	95	79	38	31	31	41

PISTON ROD CLEAVISES



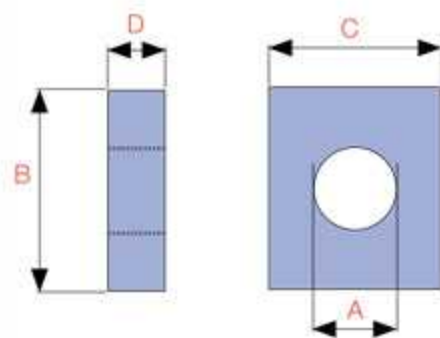
Model No.	Cylinder Capacity (ton)	Dimensions (mm)						
		A	B	C	D	E	F	G
CPC-5	5	28	41	14	16	16	19	3/4"-16UNF
CPC-1015	10/15	42	61	25	22	25	28	1"-8UNC
CPC-25	25	57	74	38	31	31	35	1 1/2"-16UN

CYLINDER JACKING BASES



Model No.	Cylinder Capacity (ton)	Dimensions (mm)				
		A	B	C	D	E
CB-10	10	228	228	135	58	20
CB-25	25	279	279	140	86	26
CB-50	50	300	300	100	130	41

MOUNTING BLOCKS



Model No.	Cylinder Capacity (ton)	Dimensions (mm)			
		A	B	C	D
CMB-5	5	1 1/2"-16UN	88	76	25
CMB-10	10	2 1/4"-14UN	114	88	25
CMB-15	15	2 3/4"-16UN	101	114	38
CMB-25	25	3 5/16"-12UN	127	165	50

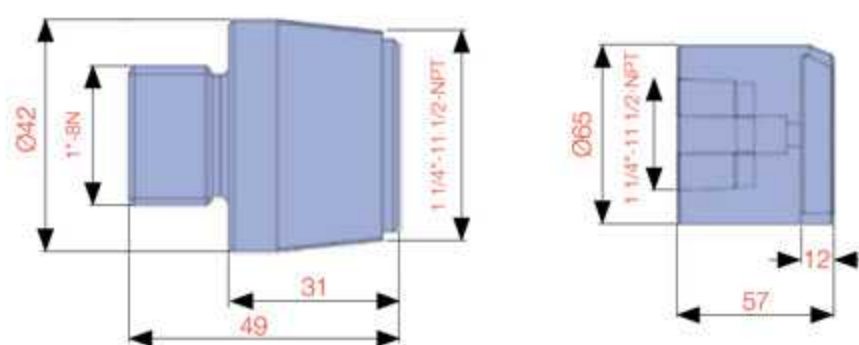
BASE ATTACHMENT

THREAD ADAPTOR



ZAM1245

ZAM1246



ZAM1245 and ZAM1246 allows Durapac RG 10 ton series cylinders (excluding RG-101) to be used with CRK-10 attachments.