

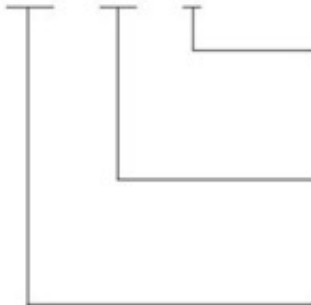
# Pressure Reducing Valves

減壓閥



## 型號說明/HOW TO ORDER

RG - 03 - 1



壓力調整範圍 Pressure Adjusting Range

- 1 : 7-70 kgf/cm<sup>2</sup>
- 2 : 35-140 kgf/cm<sup>2</sup>
- 3 : 70-210 kgf/cm<sup>2</sup>

通徑 Valve Size

- 03 : 3/8"
- 06 : 3/4"
- 10 : 1-1/4"

安裝型式 Mounting

- 板式安裝 RG : Sub-Plate Mounting
- 管式安裝 RT : Threaded Connections

## 附件/ ATTACHMENT

型式 MODEL	安裝螺絲 SOC HOL CAP SCREW
RG-03	M10 x 55L.....4pcs
RG-06	M10 x 55L.....4pcs
RG-10	M10 x 55L.....6pcs

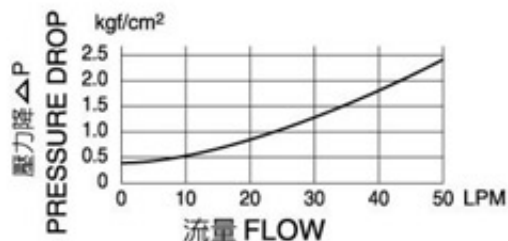
## 規格說明/SPECIFICATIONS

型式 MODEL		最高使用壓力 MAX. OPERATED PRESSURE kgf/cm <sup>2</sup>	壓力調節範圍 PRESSURE ADJ. RANGE kgf/cm <sup>2</sup>	最大流量 RATED FLOW LPM	重量 WEIGHT (kg)	
管式安裝 THREADED CONNECTIONS	板式安裝 SUB-PLATE MOUNTING					
RT-03-※	RG-03-※	210	1 : 7-70	50	4.3	4.5
RT-06-※	RG-06-※		2 : 35-140	125	6.0	6.8
RT-10-※	RG-10-※		3 : 70-210	250	12.0	11.0

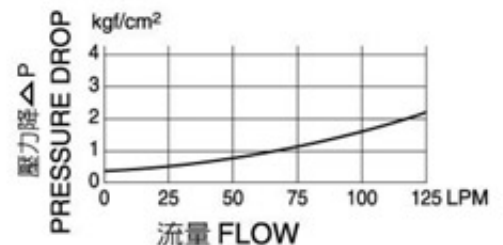
## 性能曲線圖/ PERFORMANCE CURVES

測試油黏度 : 35 cSt      Test Fluid Viscosity : 35 cSt  
 測試溫度 : 50°C      Test Temperature : 50°C  
 自由流壓力降特性      Pressure Drop For Free Flow

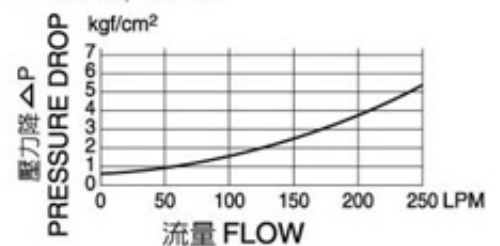
### ■ RT-03, RG-03



### ■ RT-06, RG-06



### ■ RT-10, RG-10



# Pressure Reducing Valves

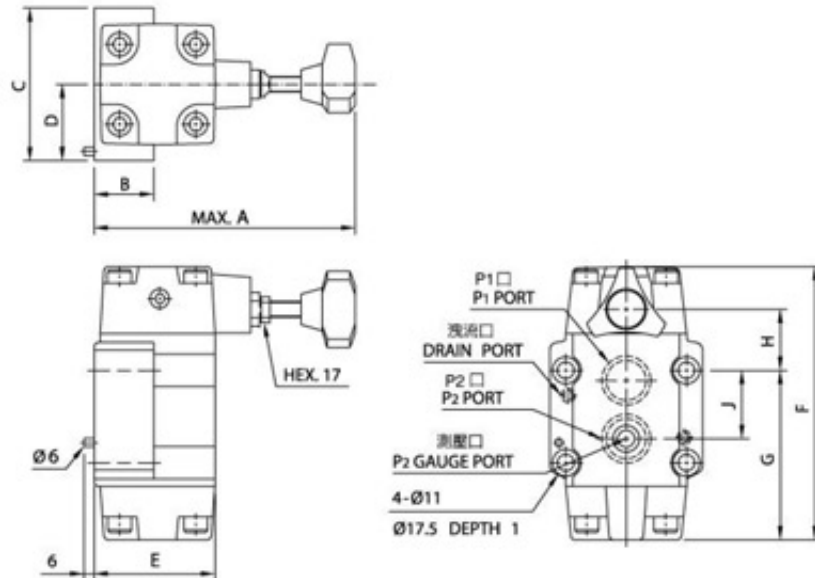
## 減壓閥



### 安裝尺寸/INSTALLATION DIMENSIONS

單位 UNIT : mm

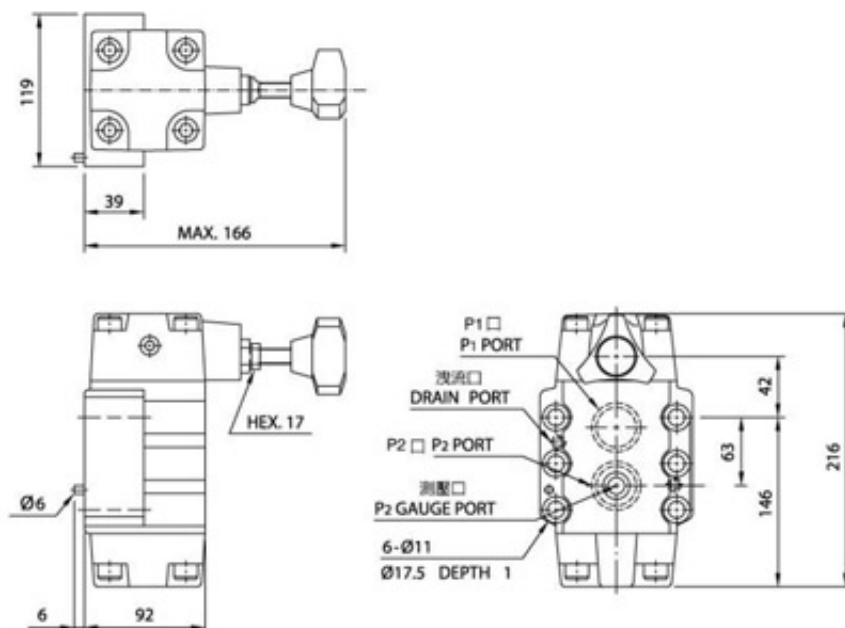
#### ■ RG-03.06



型式 MODEL	A	B	C	D	E	F	G	H	J
RG-03	164	42	89	44.5	67	155.5	92.4	40.6	35
RG-06	165.8	42	100	50	74	182	111	40	48

#### ■ RG-10

單位 UNIT : mm



# Pressure Reducing Valves

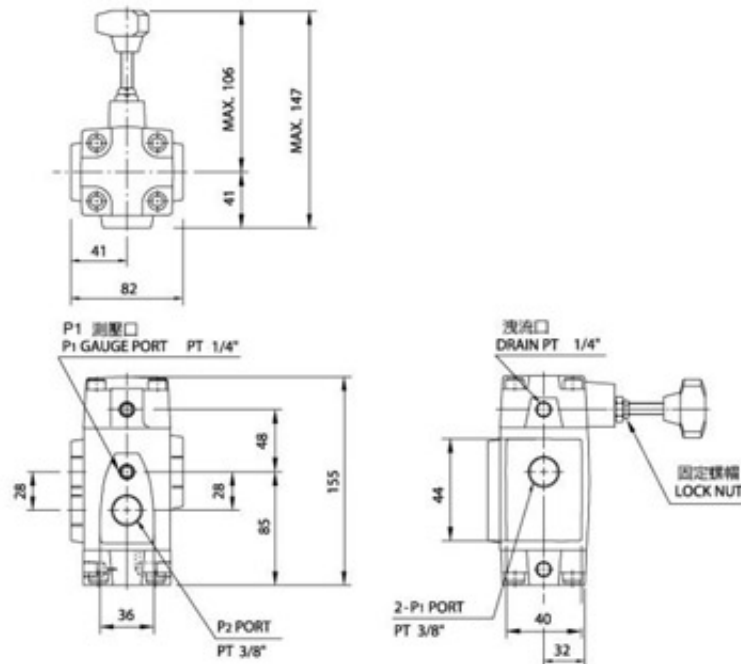
## 減壓閥



### 安裝尺寸/INSTALLATION DIMENSIONS

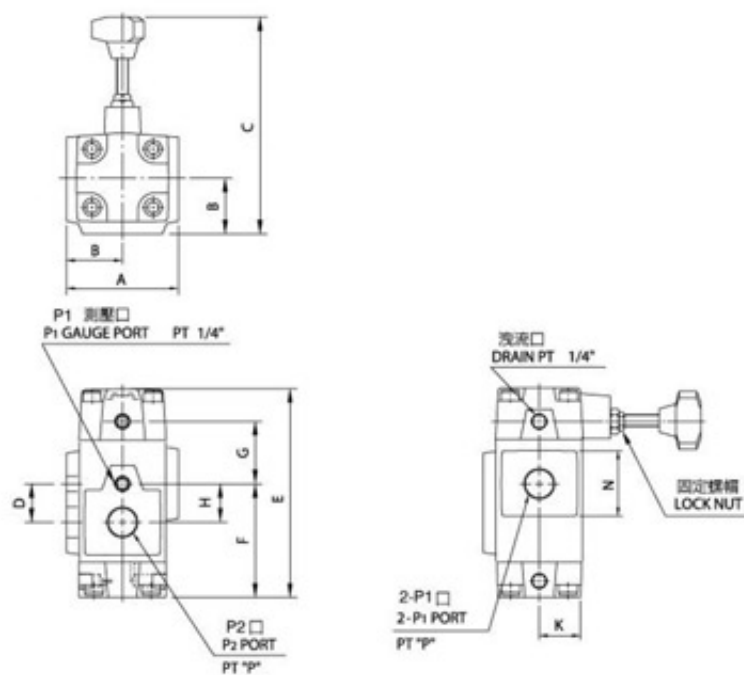
單位 UNIT : mm

#### RT-03



#### RT-06.10

單位 UNIT : mm



型式 MODEL	A	B	C	D	E	F	G	H	K	N	P
RT-06	94.8	48	150	42	179	97	53.5	33	39	62	3/4"
RT-10	132	66	167	52	216	124	64	40	50	79	1-1/4"