

# OGVFR

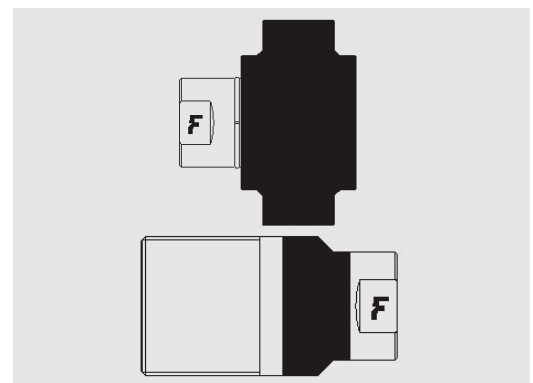


**Screw to connect couplings for oil & gas application, market interchange, API 16D certified.**

Screw-to-connect couplings suitable for Oil & Gas applications. Derived from standard OGV series, thanks to specific components and seals these couplings are API 16D certified and suitable for BOP application.



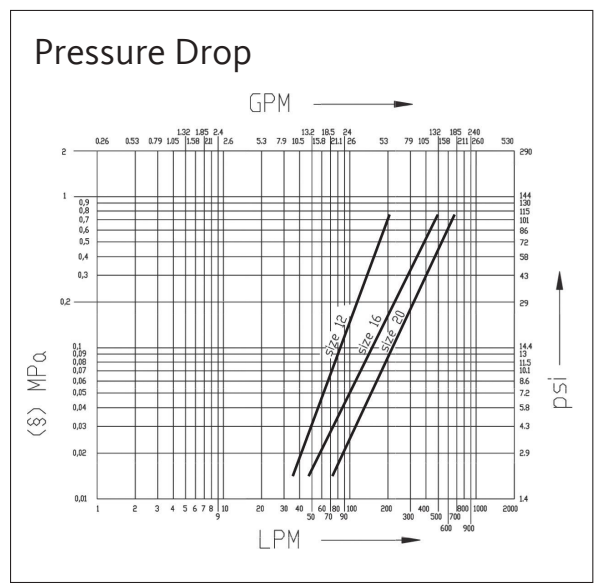
## Applications



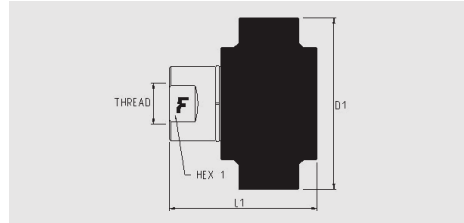
## Technical Specifications

dash	Size		Working Pressure (MPa)	Flow Rate (l/min)	Spillage (ml)	Force to Connect (N)	Burst pressure (MPa)		
	mm	inch					Male	Female	Male + Female
12	20	3/4"	34,5	120	8	0	168	160	165
16	25	1"	34,5	230	18	0	165	165	172
20	31,5	1-1/4"	34,5	320	21	0	180	200	178

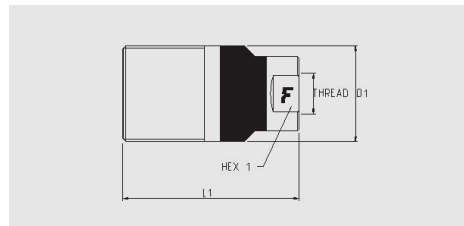
Material	<b>Steel</b>
Seals	<b>SPECIAL</b>
Working temperatures	<b>BOP</b>
Surface treatment	<b>MATE 500 (CrIII); Paint</b>
Series Interchange	<b>MARKET</b>
Valve Type	<b>Poppet</b>
Connection	<b>Screw to Connect</b>
Disconnection	<b>Unscrew to Disconnect</b>
Connection Under Pressure	<b>Allowed Residual</b>



# OGVFR



Size		Thread details			FEMALE						
inch	mm	Thread Type	Standard	Thread	Part Number	L (L1 + Thread)		D1		HEX1	
						mm	inch	mm	inch	mm	inch
3/4"	20	F NPSF	ANSI B1.20.3	NPSF 3/4 FEMALE	OGVFR12 34NPS F	72,2	2,8	65	2,6	32	1,3
1"	25	F NPSF	ANSI B1.20.3	NPSF 1 FEMALE	OGVFR16 1NPS F	87,6	3,5	105,5	4,2	41	1,6
1-1/4"	31,5	F NPTF	ANSI B1.20.3	NPTF 1-1/4 FEMALE	OGVFR20 114NPTF	111,9	4,4	118,2	4,7	50	2



Size		Thread details			MALE								
inch	mm	Thread Type	Standard	Thread	Part Number	L (L1 + Thread)		D1		D3		HEX1	
						mm	inch	mm	inch	mm	inch	mm	inch
3/4"	20	F NPSF	ANSI B1.20.3	NPSF 3/4 FEMALE	OGVFR12 34NPS M	83,1	3,3	44,3	1,7			32	1,3
1"	25	F NPSF	ANSI B1.20.3	NPSF 1 FEMALE	OGVFR16 1NPS M	106	4,2	57,1	2,3			41	1,6
1-1/4"	31,5	F NPTF	ANSI B1.20.3	NPTF 1-1/4 FEMALE	OGVFR20 114NPTM	136,5	5,4	66,7	2,6			50	2

## Accessories

### Aluminium dust caps



Plugs suitable for FEMALE



Caps suitable for MALE

Size			Plug Details		Size			Cap Details	
inch	mm	dash	Part number	Colour	inch	mm	dash	Part number	Colour
3/4"	20	12	TM OGV12 S		3/4"	20	12	TF OGV12 S	
1"	25	16	TM OGV16 S		1"	25	16	TF OGV16 S	
1-1/4"	31,5	20	TM OGV20 S		1-1/4"	31,5	20	TF OGV20 S	

