

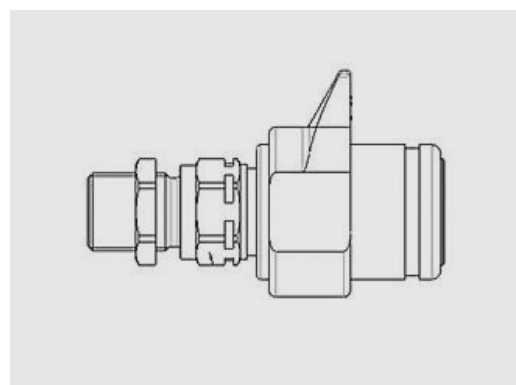
3CNV



Female couplings for agriculture with sleeve-retraction facilitator, ISO A interchange.

Female couplings connectable with the male part under residual pressure. A sleeve retraction facilitator helps to connect and disconnect. Compact design. ISO 7241-1 part A interchange.

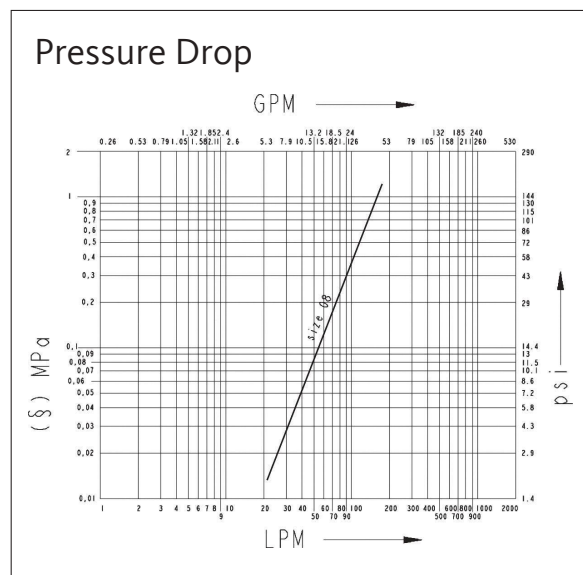
Applications

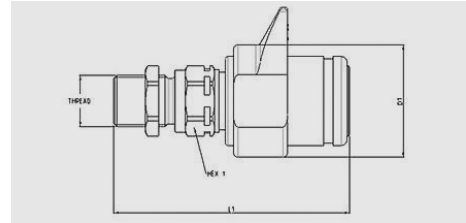


Technical Specifications

dash	Size		Working Pressure (MPa)	Flow Rate (l/min)	Spillage (ml)	Force to Connect (N)	Burst pressure (MPa)		
	mm	inch					Male	Female	Male + Female
08	12,5	1/2"	25	75	1,8	170	100	100	

Material	Steel
Seals	NBR
Working temperatures	- 25 °C to + 125 °C
Surface treatment	MATE 500 (CrIII)
Series Interchange	ISO 7241-A
Valve Type	Poppet
Connection	Sleeve Retraction
Disconnection	Sleeve Retraction
Connection Under Pressure	Allowed Male Half up to W.P.





3CNV

Size		Thread details			FEMALE						
inch	mm	Thread Type	Standard	Thread	Part Number	L (L1 + Thread)		D1		HEX1	
						mm	inch	mm	inch	mm	inch
1/2"	12,5	12/ SAE	ISO 8434-3	13/16"-16 UN MALE BULKHEAD ORFS	3CNV0812/12S F	109	4,29	48	1,89	27	1,06

Accessories

PVC dust caps



Plugs suitable for FEMALE



Plugs suitable for FEMALE

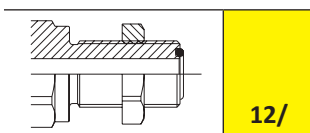
Size			Plug Details		Size			Plug Details	
inch	mm	dash	Part number	Colour	inch	mm	dash	Part number	Colour
1/2"	12,5	08	TM 12 L	blue	1/2"	12,5	08	TM 12-38	blue
1/2"	12,5	08	TM 12 L/A	orange	1/2"	12,5	08	TM 12-38 G	yellow
1/2"	12,5	08	TM 12 L/G	yellow	1/2"	12,5	08	TM 12-38 GR	grey
1/2"	12,5	08	TM 12 L/M	brown	1/2"	12,5	08	TM 12-38 M	brown
1/2"	12,5	08	TM 12 L/N	black	1/2"	12,5	08	TM 12-38 N	black
1/2"	12,5	08	TM 12 L/R	red	1/2"	12,5	08	TM 12-38 R	red
1/2"	12,5	08	TM 12 L/V	green	1/2"	12,5	08	TM 12-38 V	green

Aluminium dust caps



Plugs suitable for FEMALE

Size			Plug Details	
inch	mm	dash	Part number	Colour
1/2"	12,5	08	TM 12 S	



3CNV Accessories

Acetal Resin (POM) dust caps




Caps suitable for FEMALE

Size			Cap Details	
inch	mm	dash	Part number	Colour
1/2"	12,5	08	TA 12	blue
1/2"	12,5	08	TA 12 G	yellow
1/2"	12,5	08	TA 12 G UV	yellow
1/2"	12,5	08	TA 12 GR	grey
1/2"	12,5	08	TA 12 M	brown
1/2"	12,5	08	TA 12 M UV	brown
1/2"	12,5	08	TA 12 N	black
1/2"	12,5	08	TA 12 N UV	black
1/2"	12,5	08	TA 12 R	red
1/2"	12,5	08	TA 12 R UV	red
1/2"	12,5	08	TA 12 UV	blue
1/2"	12,5	08	TA 12 V	green
1/2"	12,5	08	TA 12 V UV	green
1/2"	12,5	08	TAID 12 N	Black automatic cap with possibility to identify the lines with a plastic ID, having different colors and +/- information. To order this cap and the ID, please contact Faster

Seal Kits

For Female

	Size			Seal Details	
	inch	mm	dash	Material	Part Number
	1/2"	12,5	08	NBR; PTFE	SK NV 12

Every seals kit is composed of 5 or 10 pcs.