

## Connecting Plate

These plates are used for detecting pressure of each line.

### Specifications

Model Numbers	Max. Operating Pressure MPa (PSI)	Max. Flow L/min (U.S.GPM)
MDS-01-*-30/3090	31.5 (4570)	35 (9.25)



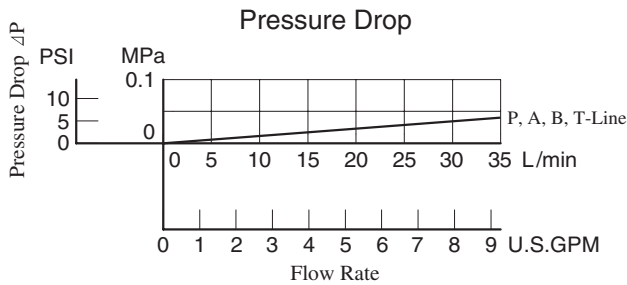
### Model Number Designation

F-	MDS	-01	-PA	-30	*
Special Seals	Series Number	Plate Size	Type of Detecting Line	Design Number	Design Standard
<b>F</b> : Special Seals for Phosphate Ester Type Fluids (Omit if not required)	<b>MDS</b> : Connecting Plate	<b>01</b>	<b>PA</b> : P&A-Lines <b>PB</b> : P&B-Lines <b>AT</b> : A&T-Lines	<b>30</b>	Refer to ★

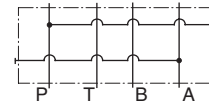
★ Design Standards: None ..... Japanese Standard "JIS" and European Design Standard  
90 ..... N. American Design Standard

### Pressure Drop

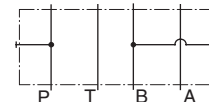
Hydraulic Fluid: Viscosity 35 mm<sup>2</sup>/s (164 SSU),  
Specific Gravity 0.850



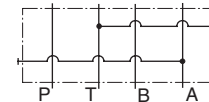
### Graphic Symbols



MDS-01-PA

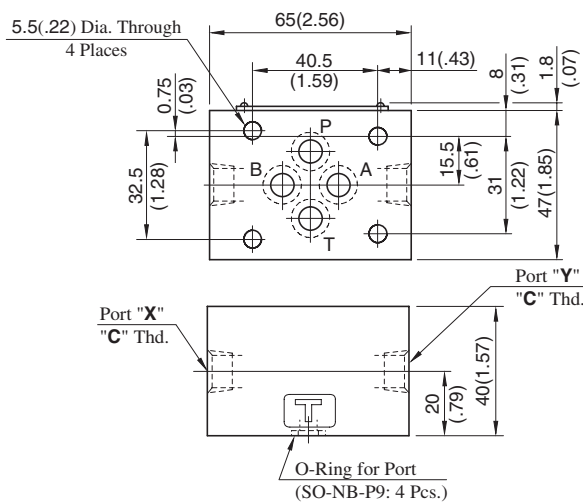


MDS-01-PB



MDS-01-AT

### MDS-01-\*-30/3090



Approx. Mass.....0.8 kg (1.8 lbs.)

Model Numbers	Pressure Detecting Line	
	Port "X"	Port "Y"
MDS-01-PA	P-Line	A-Line
MDS-01-PB	B-Line	P-Line
MDS-01-AT	T-Line	A-Line

Model Numbers	Thread Size "C" Thd.
MDS-01-*-30	Rc 1/4 = 1/4 BSP.Tr
MDS-01-*-3090	1/4 NPT

**DIMENSIONS IN  
MILLIMETRES (INCHES)**