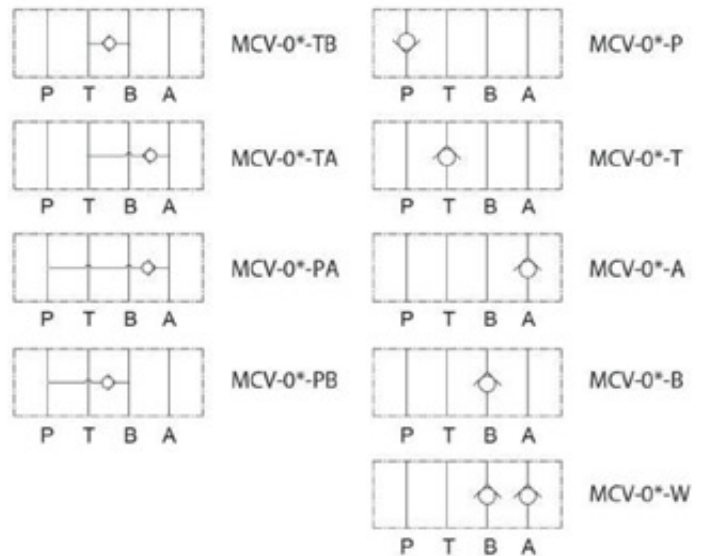
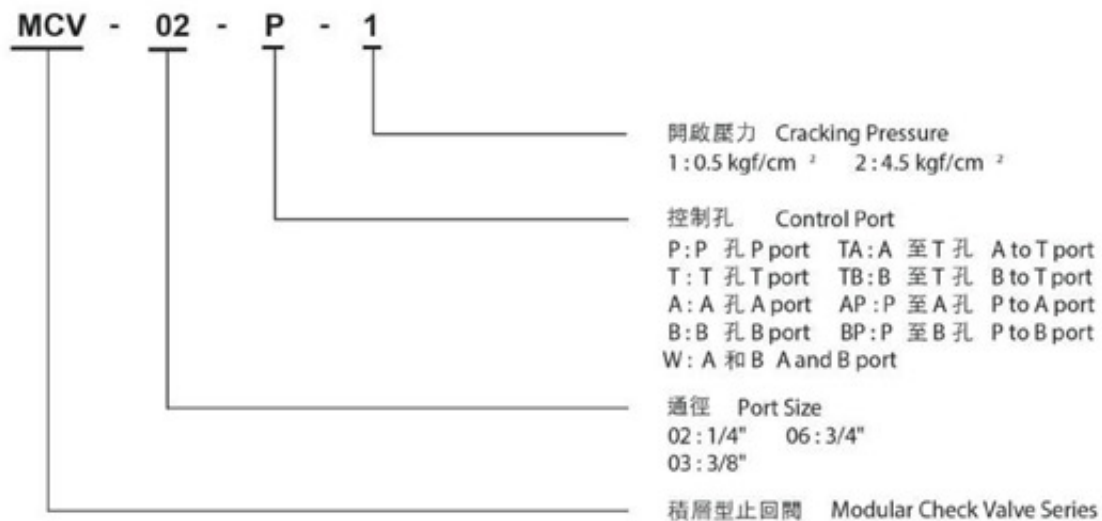


Modular Check Valve

積層型止回閥



型號說明/HOW TO ORDER



規格說明/SPECIFICATIONS

| 型式 MODEL | 最高使用壓力 MAX.PRESSURE kgf/cm ² | 最大流量 MAX.FLOW l / min | 開啟壓力 CRACKING PRESSURE kgf/cm ² | 重量 WEIGHT (kg) |
|-------------------------------|---|-----------------------------|--|----------------------|
| MC V-02-P/T/A/B/T A/TB/P A/PB | 250 | 50 | 1:0.5 2:4. 5 | 1.2 |
| MC V-02-W | | | | 1.3 |
| MC V-03-P/T/A/B/T A/TB/P A/PB | 250 | 100 | 1:0.5 2:4. 5 | 2.5 |
| MC V-03-W | | | | 3.5 |
| MC V-06-P | 250 | 180 | 1:0.5 2:4. 5 | 14.0 |

Modular Check Valve

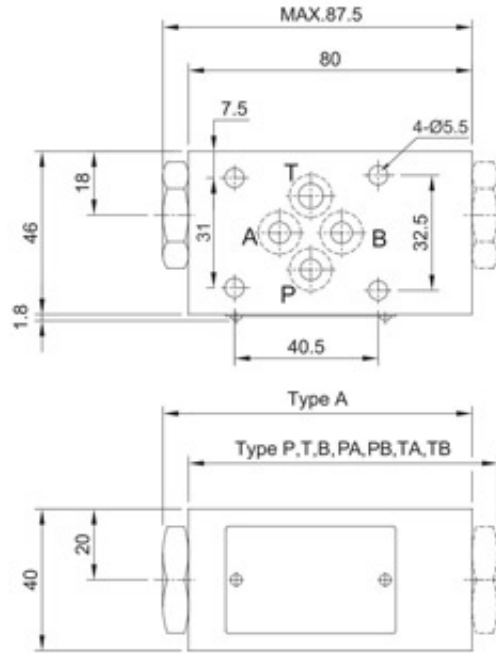
積層型止回閥



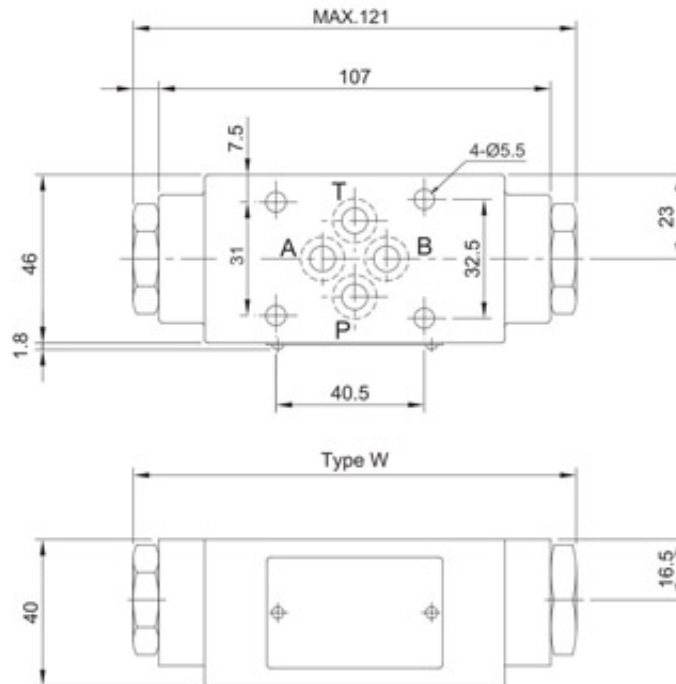
安裝尺寸/INSTALLATION DIMENSIONS

單位 UNIT : mm

■ MCV-02-A. B. P. T. PA. PB. TA. TB



■ MCV-02-W



Modular Check Valve

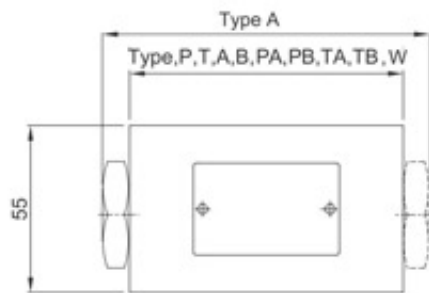
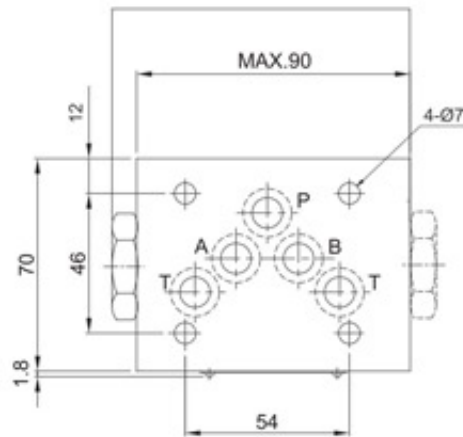
積層型止回閥



安裝尺寸/INSTALLATION DIMENSIONS

單位 UNIT : mm

■ MCV-03-A. B. P. PA. PB. TA. TB



■ MCV-06-P

