

THE **KPL-SERIES** HIGH-PRESSURE AIR BAGS FEATURE KEVLAR® CORD REINFORCING. THE PATENTED CONSTRUCTION UTILISES STATE-OF-THE-ART DESIGN FOR LONG LIFE AND EASE OF USE.

Metal parts are solid brass. The bags are thin, light and simple to use. Two bags can be stacked safely on top of each other thanks to the special dimpled surface. Eleven models of air bag are available with lifting capacities ranging from 800 to 70,400 kg.



Did you know...

That you can use two air bags stacked on top of each other to increase the lifting height?



RUBBER DIMPLES

on contact surfaces for positive gripping

CENTRING CROSS

and printing are brightly coloured and bonded to the rubber for long life

1/4"-NPT AIR NIPPLE

is replaceable

CROSSHATCH REINFORCING PATTERN

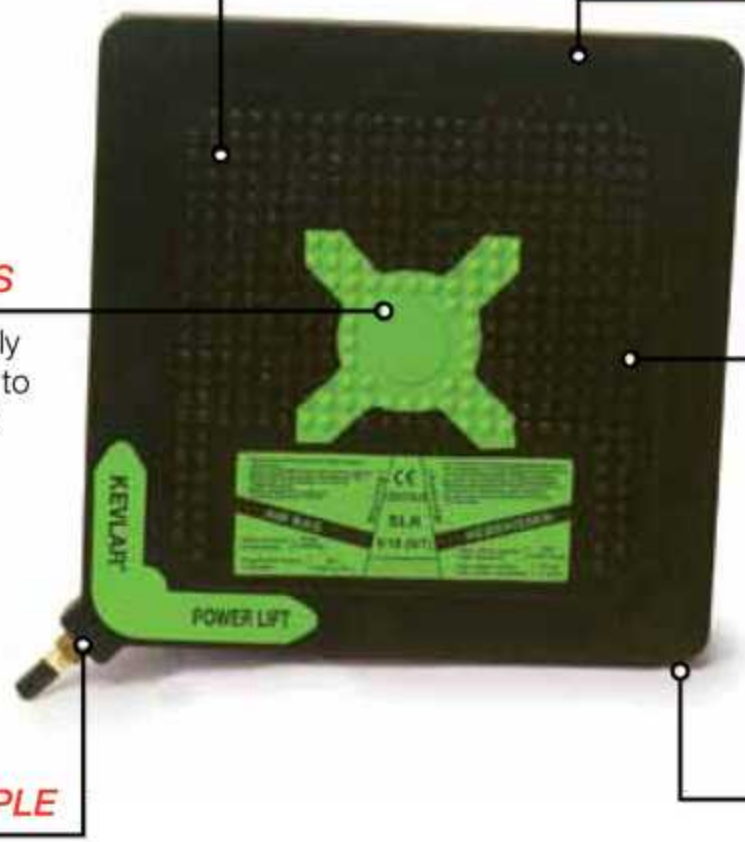
made from Kevlar®

FIREPROOF & ANTISTATIC

for use in underground coal mines (use AB-4 & AB-5 controllers)

REINFORCING EDGE

protects the bag from damage



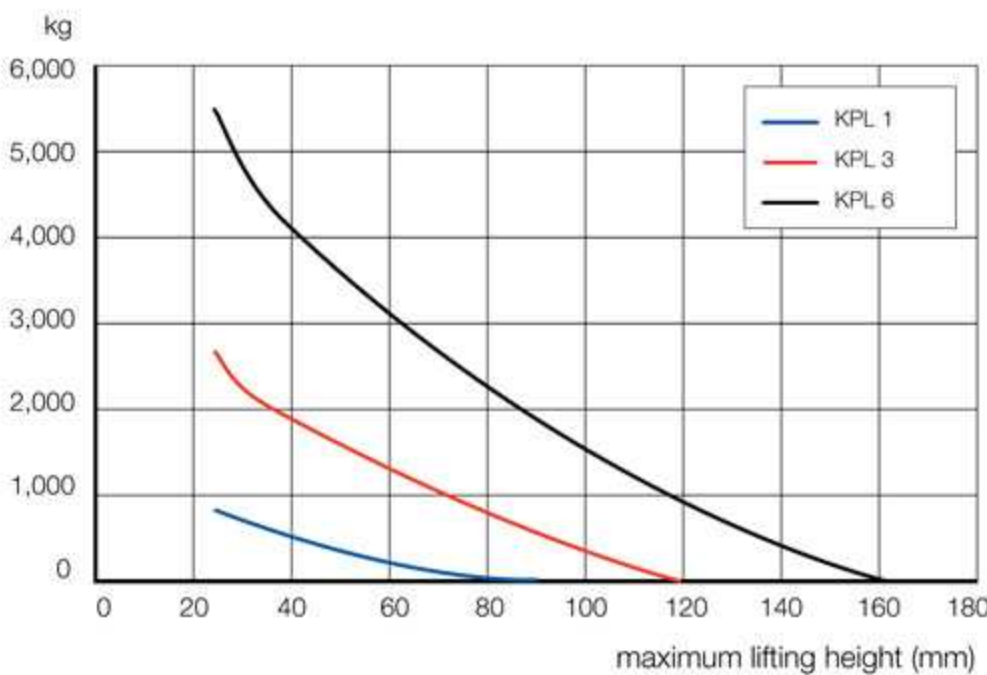
CAPACITY
800 - 70,400 kg

MAXIMUM LIFTING HEIGHT
80 - 520 mm

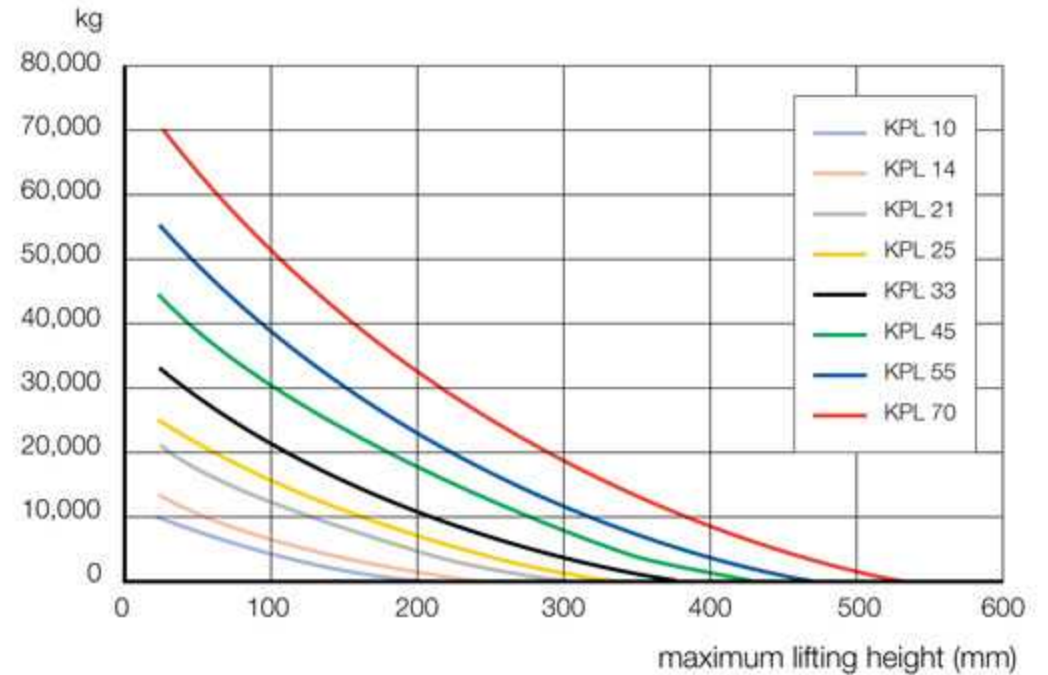
MAXIMUM OPERATING PRESSURE
8 bar

LIFTING CAPACITY VS LIFTING HEIGHT GRAPH

maximum lifting capacity



maximum lifting capacity



Model No.	Max. Lifting Capacity (kg)	Max. Lifting Height (mm)	Thickness (mm)	Insertion Height (mm)	Dimensions (cm x cm)	Max. Air Requirement (L)	Max. Inflation Pressure (bar)	Min. Burst Pressure (bar)	Weight (kg)
KPL 1	800	80	25	26	15 x 15	5	8	32	0.55
KPL 3	2,700	130	25	26	22.5 x 22.5	15	8	32	1.25
KPL 6	5,500	160	25	26	30 x 30	42	8	32	2
KPL 10	10,100	210	25	26	38 x 38	86	8	32	3.5
KPL 14	13,500	250	25	26	45 x 45	152	8	32	5
KPL 21	21,100	300	25	26	55 x 55	296	8	32	7
KPL 25	25,200	340	25	26	61 x 61	416	8	32	9
KPL 33	33,000	380	25	26	69 x 69	621	8	32	11
KPL 45	44,600	420	25	26	78 x 78	921	8	32	14
KPL 55	55,000	470	25	26	87 x 87	1,305	8	32	18
KPL 70	70,400	520	25	26	94.5 x 94.5	1,505	8	32	22.5

AB-1

Single Deadman Controller - with pressure relief valve and pressure gauge. Controls one air bag.



AB-2

Dual Deadman Controller - with pressure relief valves and pressure gauges. Controls two air bags from one air source.



AB-3

Deluxe Dual Deadman Controller - with built-in pressure relief valves and pressure gauges and pressure sensitive toggle controls. For precise inflation and deflation of two air bags.



AB-4

Single Safety Controller - with pressure relief valve and pressure gauge. For inflation and deflation of one air bag.



AB-5

Dual Safety Controller - with pressure relief valves and pressure gauges. For inflation and deflation of two air bags.



ABC-1Y

Y-Connector - connector allows control of two bags with one controller.



SAFETY CONTROLLERS AND ACCESSORIES ALLOW THE EFFICIENT AND SAFE USE OF THE KPL-SERIES AIR BAGS.

Single and dual deadman controllers with pressure gauge and pressure relief valves offer maximum air bag inflation and deflation control, while single and dual safety controllers offer a cost effective and reliable air bag control solution. Hoses, connectors, shut-off valves and pressure regulators allow maximum flexibility in the air bag system.

ABCR-1

Pressure Regulator Controller - diaphragm type single stage regulator suits high pressure air tanks.



AIR BAGS

ABHR-5, ABHB-5, ABHY-5 5M RED/BLUE/YELLOW ABHR-10, ABHB-10, ABHY-10 10M RED/BLUE/YELLOW

Hoses - available in 5/10m in RED/BLUE/YELLOW with male and female air coupler fitted.



ABV-1

Inline Shutoff Valve - with 0.5 metre whip hose



ABV-2

Inline Shutoff Valve - with relief valve

